

FIREPLACE INSERTS 2023

„TIMES MAY
CHANGE,
BUT
my Fire
STILL
BURNS.“



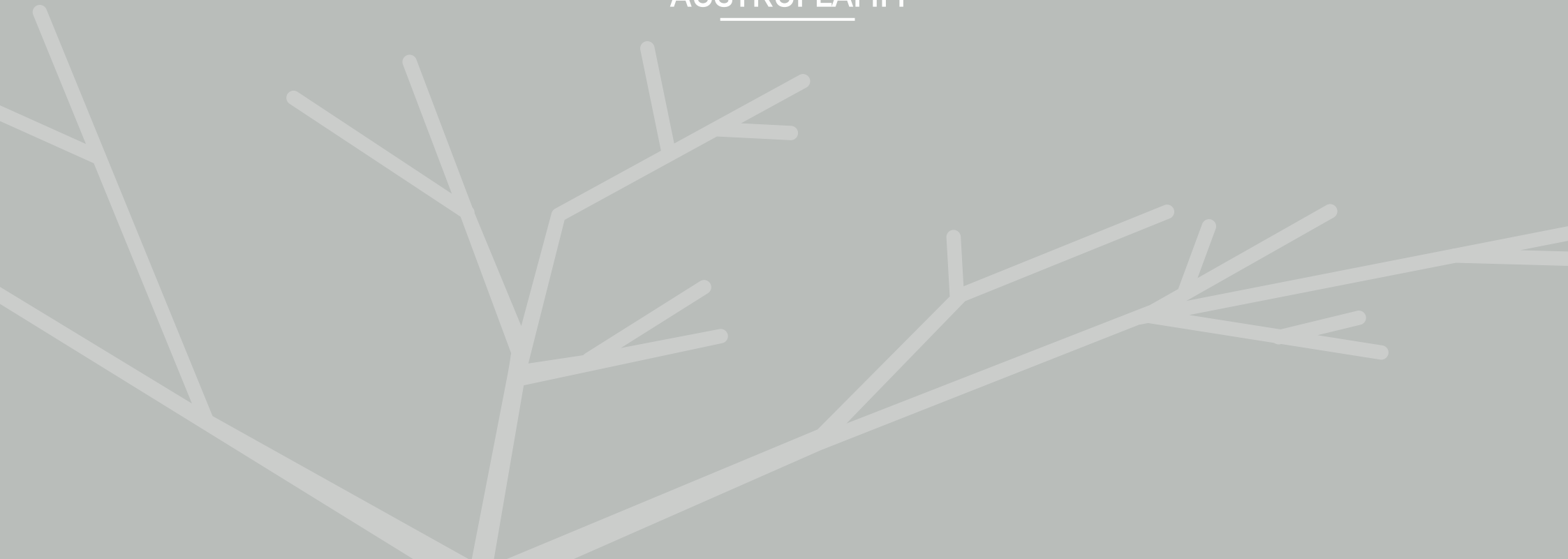
AUSTROFLAMM

www.austroflamm.com





AUSTROFLAMM



C O N T E N T S

index

04

A multifaceted pioneer

06

What it's all about

08

Fifteen good reasons

12

Heat sustainably and smart

14-39 Fireplace inserts

14-23 FRONT FIREPLACES

24-25 TUNNEL FIREPLACES

26-31 CORNER FIREPLACES

32-37 THREE-SIDED GLAZED
FIREPLACES

38-39 VUUR DRIE

40

Technical details



AUSTROFLAMM

Fire is the philosophy source of everything.

FERDINAND HUEMER,
A MULTIFACETED INNOVATOR.

At the beginning of the 80s, Ferdinand Huemer recognised the need to free wood-burning stoves from their somewhat outmoded image. He declared his aim was to develop stoves that would not only provide cosy warmth but would also revolutionise design and efficiency - and founded Austroflamm. By March 1983 he had already begun to supply the first stoves. The company grew rapidly and moved to a new building in 1994, particularly as it was now exporting to Australia and Japan. One year later Austroflamm launched the first pellet stove on European soil - one of many other innovations that were to follow.

That is the entrepreneur, who with a blend of creativity, zest for action, courage and determination transformed his company into the market leader. Then there is the musician Ferdinand Huemer who plays several instruments, composes and writes – one of



his most recent projects being "Masita" - and manages the "Nest" recording studio as a producer. And finally there is the farmer who enjoys an egg for breakfast each morning straight from his own chickens.

What unites these three lifestyles is not only the name and the identical face behind them, but above all one characteristic: passion, expressed through complete commitment and sheer determination to achieve every goal he has set himself.

There is no question about it: *Ferdinand Huemer has dedicated his life to fire and human warmth.*"

What matters most: passion, partnership,
team spirit and human warmth.



The Austroflamm COMPANY PHILOSOPHY is inseparably linked to its founder and owner Ferdinand Huemer. His esprit, his passion for innovation, his visionary thinking and actions are reflected in the way in which the company has evolved.

The enthusiasm for unconditional quality and exceptional design is also evident in his employees, leading time and again to trend- setting technological developments.

Austroflamm is THE PIONEER in the use of ceramic, developing innovative types of storage materials such as HMS (Heat Memory System), XTRA stored heat, and the in-house developed and produced Keramott – and has thus been crucially involved in having significantly reduced the emission values of combustion products for solid fuels in the last 25 years.

Austroflamm is constantly setting new standards in the industry. Sustainable thinking and acting, team spirit and partnership distinguish the company in its dealings with customers, but also within the team. Our guiding principle is respect for others because ultimately, what really matters in life is human warmth.



1

Teresa Huemer

2

Ferdinand Huemer

3

Sebastian Köck

4

Doris Pfeiffer

15 reasons,

for choosing an Austroflamm
fireplace insert...

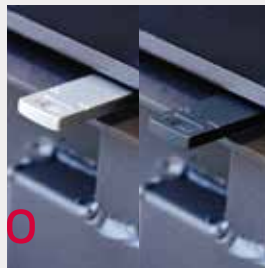
one



KERAMOTT:

Light-coloured firebox lining, which guarantees clean combustion by means of optimum insulation.

two



CONTROL ELEMENTS:

Combustion air controls are a distinctive feature designed in matt chrome (black on request), and are safe and easy to operate.

three



SMOKE COLLECTOR:

Manufactured from durable cast iron for many models; all elements can be rotated 360° for easy flue connection.

four



ADJUSTABLE FEET:

Quick, simple and safe to adjust.

five



WINDOW GLASS:

Extremely heat-resistant ceramic glass, reverse printed at the edge. And always of maximum dimensions for a good view of the flames.

six



OUTSIDE AIR CONNECTION:

Combustion air is supplied via a feed pipe which can also be easily routed to the outside. All fireplace inserts are prepared for an outside air connection as standard!

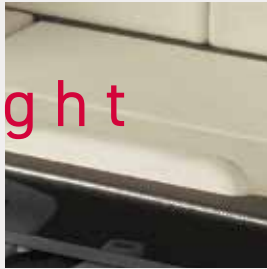
seven



HEAT STORAGE SYSTEM:

Equipped for the installation of heat storage systems, e.g. the patented Heat Memory System. Of course, top-mounted storage units and reheating surfaces can also be connected.

eight



COMBUSTION AIR FLOW:
Crucial for low-emission combustion and clean glass surfaces. Using only one control element, secondary air (glass flushing) and primary air are opened in succession - incorrect operation is impossible!

twelve



SWIVEL MECHANISM:
Sliding doors can also be swung open for cleaning purposes - no tools required!

nine



DOOR HINGES:
On the left as standard, but can easily be changed to the right if desired.

thirteen



DOOR HANDLES:
Elegant shape, luxurious surface - handles for hinged and sliding doors are available in matt chrome (standard), black, matt chrome with walnut inlay, and black with black wooden inlay.

ten



SELF-LOCKING DOORS:
Our hinged doors are not only self-closing, but self-locking too! This not only makes them more convenient to use, but also provides greater safety, which is particularly important when balanced flue operation is required.

fourteen



BLACK KERAMOTT:
Some models are also available with black Keramott firebox lining

eleven



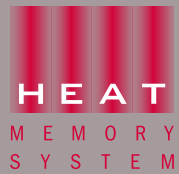
SLIDING DOOR GUIDES:
Extremely quiet and smooth running. Counterweights ensure that they are easy to use.

fifteen



DIBT-TESTED:
Many of our appliances are also certified as tested by the DIBT (GERMAN INSTITUTE FOR STRUCTURAL ENGINEERING)

Storage heat



HEAT MEMORY SYSTEM (HMS)

You want to build up the fire less often, get maximum benefit from your fuel and so reduce heating costs? The fireplace must deliver warmth quickly and not overheat the room, but give off a prolonged, even heat instead? Cosy, healthy, long-wave radiant heat is exactly what you are looking for? In that case, the Heat Memory System from Austroflamm will tick all your boxes.

This high-density material has been specially developed and patented by Austroflamm for this purpose. The material absorbs heat quickly, stores it and then releases it slowly and evenly.

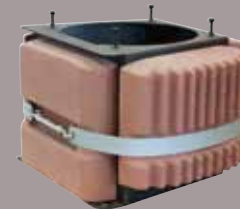


Heat Memory
System plates

INSTALLATION OF THE STORAGE MASS.

Another "secret" of the Heat Memory System's effectiveness is its location: it should be as close as possible to the firebox to ensure optimum heat transfer. That is why there is a suitable Heat Memory System for every fireplace insert.

The method of installation is also patented.



storage box



top-mounted storage



reheating box
with HMS

Clean combustion for a green future

Keramott
firebox lining

KERAMOTT

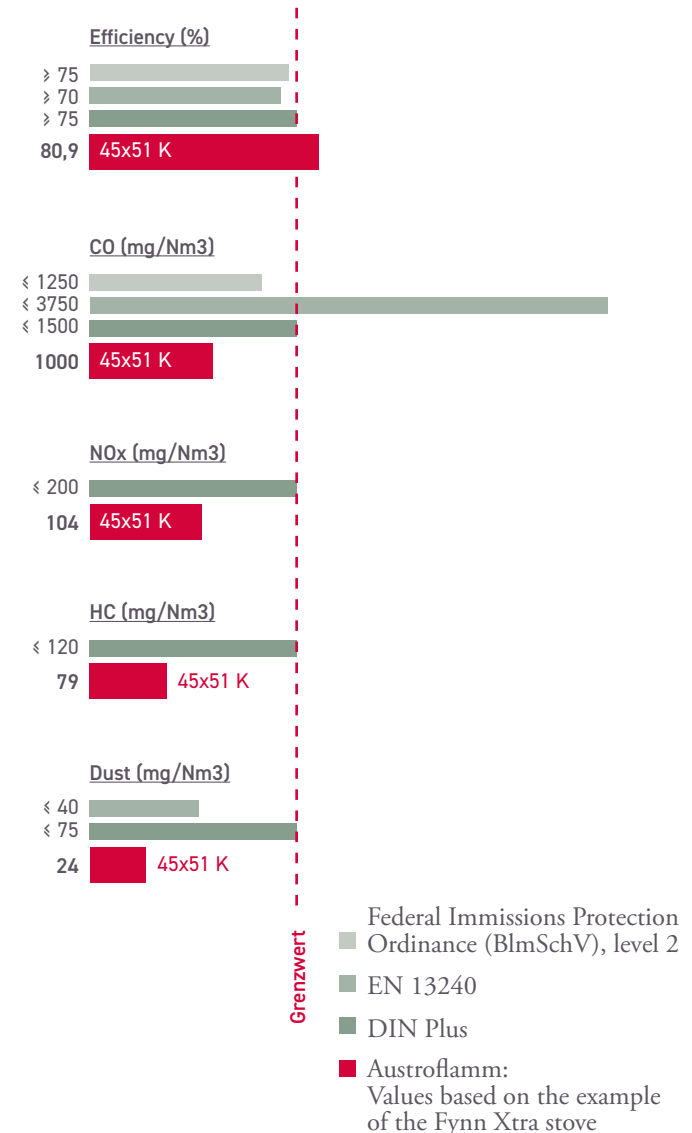
STATE-OF-THE-ART FIREPLACE INSERTS not only call for design concepts but also enormous development efforts in the field of combustion technology.

A quintessential example of this is the firebox lining: in all Austroflamm fireplace inserts, these important components are made of Keramott. Keramott is a special development, available exclusively at Austroflamm. The material is characterised by a particular relationship between thermal insulation and heat conduction, which allows high temperatures in the firebox to be reached more quickly. Only this enables "clean", low-emission combustion, and the material is highly heat-resistant up to approx. 1,200 °C. In addition, the firebox can also "burn itself clean": the lining absorbs less soot than comparable materials and remains pleasantly bright. This effect is also enhanced by the surface structure of Keramott.

COMBUSTION TECHNOLOGY

It goes without saying that our appliances are renowned for their sophisticated design. But technology, and above all combustion technology, is no less important to us. For one thing, increasingly strict standards throughout Europe oblige us to be that way. But these standards and legal regulations, however new and rigorous they may be, are not incentive enough for us. With the help of our engineers, we push the boundaries by constantly coming up with new innovations.

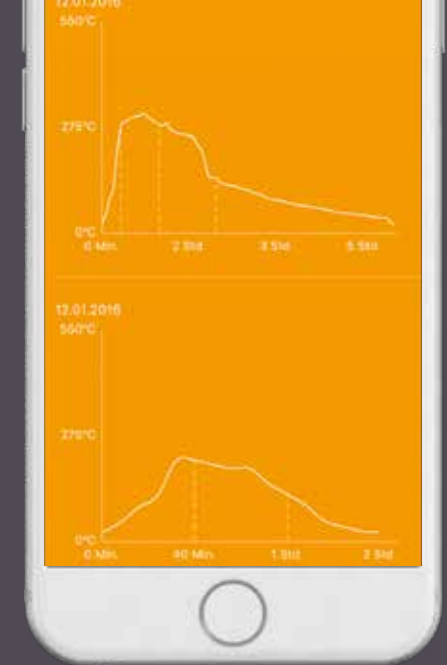
LIMIT VALUES IN ACCORDANCE WITH EN 13240 AND DIN PLUS



Insert Control

MAKE IT EASY FOR YOURSELF:

Enjoy even more comfort thanks to the new combustion control system. You don't want the bother of choosing the optimum air setting, but would rather simply enjoy the fire? And you certainly don't want to get up from the sofa to readjust the air settings, but you still want to ensure optimum combustion? Then let the automatic combustion control system, Insert Control, take care of the air regulation for you. The only control system with combustion curves specially designed for Austroflamm fireplace inserts. And if you feel like it, you can monitor everything from your smartphone (iOS or Android).



aquaHEAT

Fireplace insert

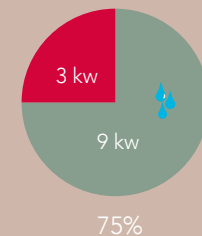
can do
even more

You want your firewood to go even further? You want to use your fireplace system for heating your entire house? That's no problem at all, because our aquaHEAT model can be integrated into your heating circuit. You can use it to produce hot water for baths and showers as well as warm water for underfloor heating, for example.

In the case of the 65x51K aquaHEAT model, 75% of the power is accounted for by the water component. Further highlights: the shallow installation depth (< 50 cm), low weight and the small flue pipe exit (Ø 180 mm).



aquaHEAT 
65 X 51 K



FRONT

FIREPLACES





4 5 x 6 8 K

VERSATILE

Extraordinary ideas are best expressed with an Austroflamm fireplace insert.



4 5 x 5 1 K ROUND

Pictured left:

4 5 x 5 1 K

infireplacedesignKeraXtra

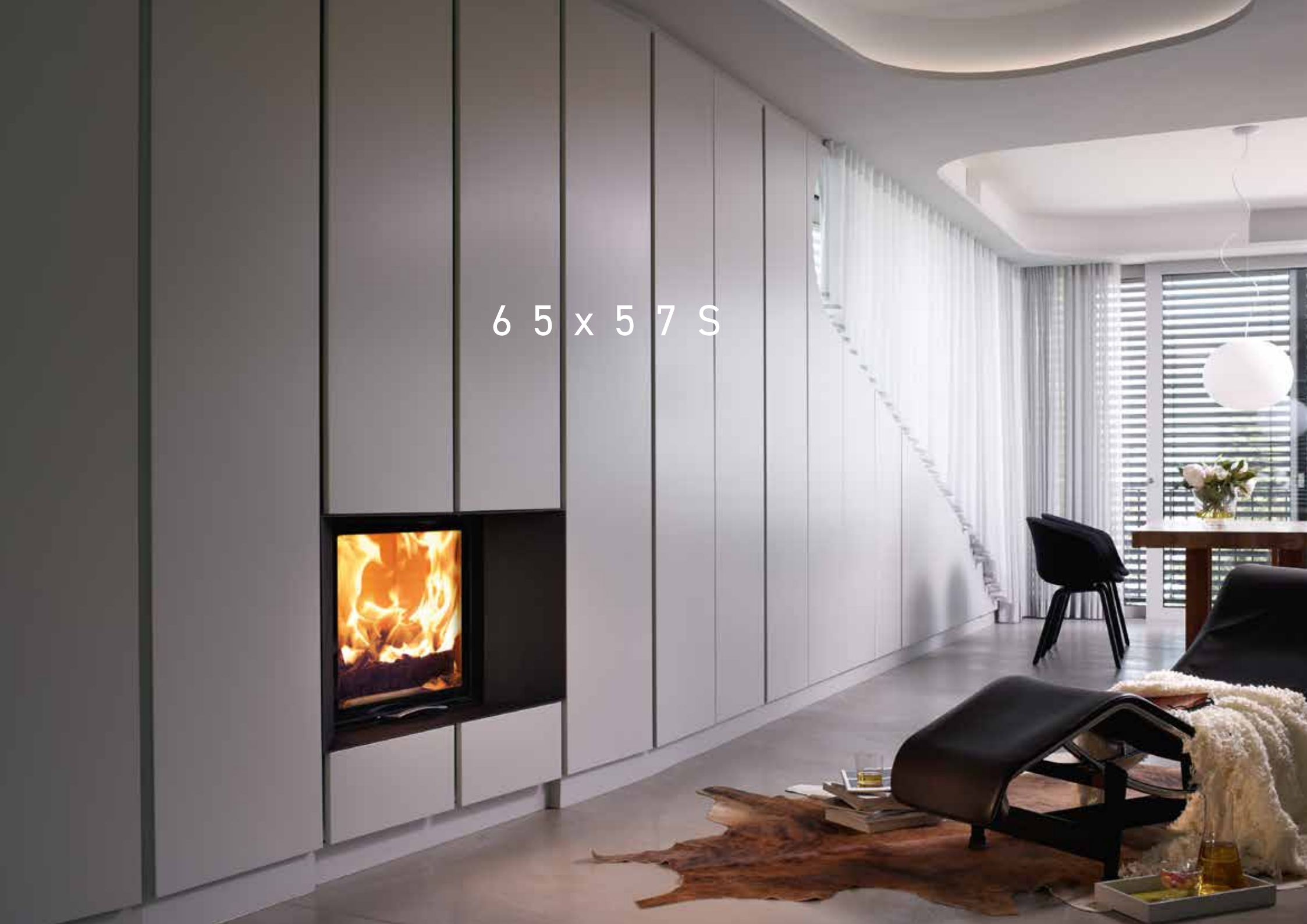
UNHURRIED AND
RELAXING



5 5 x 5 7 K

Why not have a fireplace in the bathroom, or in the office by way of a warming change? Wherever you want to feel a sense of slowing down, a crackling hearth will whisk you away in mind and spirit.

6 5 x 5 7 S



7 5 x 3 9 S



CLASSICALLY 80 X 64 S MODERN

What does your feel-good room with its fireplace look like? From the classic country house to the modern city loft, our fireplace inserts adapt perfectly to suit your individual requirements.



7 5 x 3 9 K

8 0 x 6 4 S



M I U

75 x 39 K



A MASTER OF
TRANSFORMATION



8 0 x 6 4 S

Our fireplace inserts fill every room with cosy warmth and unique, individual design. There are virtually no limits to the imagination.



7 5 x 5 7 S

FLAMES IN
WIDE-SCREEN FORMAT



9 7 x 4 5 S

Coming home in the evening and warming yourself by the fire:
this is what relaxation looks like

1 2 0 x 4 5 S



TUNNEL

FIREPLACES





75 x 39 S II

WITH A
VIEW THROUGH
Modern, but still retaining
the cosy, original warmth
of a log fire.



45 x 57 K + 80 x 64 S II



75 X 51 S II 2.0

Pictured left:
75 x 39 K II

CORNER

FIREPLACES



CORNER FIREPLACES

Corner fireplaces allow the fire to be displayed simultaneously at multiple locations in the room.



3 8 x 3 8 x 5 7 K

6 3 x 4 0 x 4 2 K



Pictured left:

6 3 X 4 0 X 4 2 S 2 . 0

EXTRAORDINARILY
APPEALING

6 3 X 4 0 X 5 1 S 2 . 0



Large panes of glass in interesting formats are the perfect stage for an exquisite log fire.



69 x 49 x 57 S

8 9 x 4 9 x 5 7 S



8 9 x 4 9 x 4 5 S

Pictured right:
8 9 x 4 9 x 4 5 S





THREE SIDED

GLAZED FIREPLACES



4 8 x 7 2 x 5 1 S 3

ELEMENTS OF MODERNITY

An architectural masterpiece - the fireplace insert with glazing on three sides. It separates the room into a dining room and a cosy reading corner. The play of flames, visible from all three sides, invites you to while away a few pleasant hours together.

Pictured left:

4 8 X 7 2 X 5 1 S 3

4 8 x 7 2 x 5 1 S 3



EACH
TO THEIR OWN



6 4 x 3 3 x 5 1 S 3

Linking element and room divider at the same time.

DIVERSITY

Thanks to the multitude of different sizes and models available, you will find the right fireplace insert for every size of room. From the small, cosy living room to the large open plan living area, our fireplace inserts provide cosy warmth everywhere

UNIQUELY
SHOWCASED



6 4 x 3 3 x 5 1 S 3

COLLECTIBLES

Collect unforgettable moments! You can't get more glass than this: the panes of our S3 models showcase the fire, no matter where you are in the room.

Pictured right:

7 5 x 3 5 x 4 5 S 3



V U U R
D R I E 8 0



BLACK BEAUTY
VUUR DRIE FIREPLACE INSERT

V U U R D R I E 8 0



The VUUR DRIE series from Austroflamm captivates through its simple, elegant design. The black firebox and the particularly narrow frame profiles make the fireplace insert a modern designer piece. Thanks to the glass window, which can be almost fully raised, and the particularly large fireplace opening, the VUUR DRIE series offers maximum heating comfort and immediate flame play. Equipped as standard with a flat fire floor and embers basket, the fireplace insert can also be supplemented with a grill system. Despite its compact design, the VUUR DRIE series offers modern firebox dimensions, which provide the main actor, the fire, with a generous stage. Equipped with proven Austroflamm technology, the fireplace insert guarantees clean, low-emission combustion.

45 K**45 K ROUND****55 K****65 K****65 S****75 K****TECHNICAL DATA**

Width (installation dimension of corpus)	450 mm	450 mm	550 mm	650 mm	650 mm	750 mm
Height of door frame	510 / 570 / 680 mm	510	450 / 510 / 570 mm	450 / 510 / 570	510 / 570 mm	390 / 570 mm
Door shapes	straight	round	straight	straight	straight	straight
Hinged doors	as standard	as standard	as standard	as standard	-	as standard
Sliding doors	-	-	-	-	as standard	-

MASS

Width	505 mm	483 mm	605 mm	739 mm	739 mm	839 mm
Depth	471 mm	541 mm	471 mm	516 mm	537 mm	516 mm
eight	1245-1445 / 1305-1505 / 1415-1615 mm	1245-1445	1185-1385 / 1245-1445 / 1305-1505 mm	1183-1383 / 1245-1445 / 1305-1505 mm	1245-1445 / 1305-1505 mm	1125-1325 / 1305-1505 mm
Weight	95 / 100 / 110 kg	106	101 / 107 / 112 kg	114 / 120 / 127 kg	168 / 178 kg	118 / 139 kg
Flue pipe outlet	ø 160 mm	ø 160 mm	ø 160 mm	ø 180 mm	ø 180 mm	ø 180 mm

OUTPUT

Nominal heat output acc. to EN 13229	6 kW	6 kW	7 kW	8 kW	8 kW	10 kW
Energy efficiency class	A +	A +	A +	A +	A +	A +
Flue gas mass flow	5,14 / 5,2 / 5,2 g/s	5,14	5,85 / 6,01 / 6,17 g/s	7,32 / 7,74 / 6,76 g/s	7,74 / 6,76 g/s	8,13 / 7,7 g/s
Flue gas temperature	354 / 371 / 387 °C	354 °C	275 / 313 / 351 °C	283 / 298 / 317 °C	298 / 317 °C	313 / 330 °C
Minimum discharge pressure	12 PA	12 PA	12 PA	12 PA	12 PA	12 PA
Dust emissions	≤ 27 mg/m ³	≤ 27 mg/m ³	≤ 39 mg/m ³	≤ 38 mg/m ³	≤ 35 mg/m ³	≤ 40 mg/m ³
Efficiency rate	80,9 / 80,9 / 80,8 %	80,9 %	82 / 82 / 80,1 %	80,6 / 80,5 / 80 %	81 / 80 %	81,9 / 82 %

75 S**80x64 S****97 S****120x45 S****45 K II****TECHNICAL DATA**

Width (installation dimension of corpus)	750 mm	800 mm	970 mm	1200 mm	450 mm
Height of door frame	390 / 570 mm	640 mm	450 / 740 mm	450 mm	510 mm
Door shapes	straight	straight	straight	straight	straight
Hinged doors	-	-	-	-	as standard
Sliding doors	as standard	as standard	as standard	as standard	-

MASS

Width	839 mm	1044 mm	1214 mm	1444 mm	473 mm
Depth	537 mm	550 mm	550 mm	550 mm	600 mm
eight	1125-1325 / 1339-1539 mm	1360-1560 mm	1170-1370 / 1460-1660 mm	1170-1370 mm	1243-1443
Weight	161 / 194 kg	280 kg	272 / 340 kg	316 kg	124 kg
Flue pipe outlet	ø 180 mm	ø 180 mm	ø 180 mm	ø 180 mm	ø 160 mm

OUTPUT

Nominal heat output acc. to EN 13229	10 kW	10 kW	11 / 12 kW	13 kW	6 kW
Energy efficiency class	A +	A +	A +	A +	A +
Flue gas mass flow	8,13 / 7,7 g/s	8,28 g/s	9,96 / 9,9 g/s	14,88 g/s	5,52 g/s
Flue gas temperature	313 / 300 °C	312 °C	274 / 288 °C	254 °C	292 °C
Minimum discharge pressure	12 PA	12 PA	12 PA	13 PA	12 PA
Dust emissions	≤ 40 mg/m ³	≤ 24 mg/m ³	≤ 26 mg/m ³	≤ 30 mg/m ³	≤ 23 mg/m ³
Efficiency rate	82 %	80,5 %	80,2 / 80,1 %	81 %	80,2 %

75x39 K II



75 S II



80x64 S II



38x38x57 K



55X55X..K



TECHNICAL DATA

Width (installation dimension of corpus)	750 mm	750 mm	800 mm	380 mm	550 mm
Height of door frame	390 mm	390 / 510 mm	640 mm	570 mm	510 / 570 / 680 mm
Door shapes	straight	straight	straight	90° corner	90° corner
Hinged doors	as standard	-	-	as standard	as standard
Sliding doors	-	as standard	as standard	-	-

MASS

Width	773 mm	848 mm	1044 mm	409 mm	579 mm
Depth	511 mm	527 mm	565 mm	409 mm	579 mm
eight	1124-1324 mm	1123-1323 mm / 1284-1484 mm	1360-1560 mm	1093-1293 mm	1230-1430 / 1290-1490 / 1400-1600 mm
Weight	130 kg	186 / 202 kg	269 kg	72 kg	105 / 109 / 117 kg
Flue pipe outlet	ø 180 mm	ø 180 mm	ø 180 mm	ø 150 mm	ø 180 mm

OUTPUT

Nominal heat output acc. to EN 13229	10 kW	10 / 12 kW	10 kW	5 kW	7 kW
Energy efficiency class	A +	A +	A +	A +	A
Flue gas mass flow	7.26 g/s	7.3 / 13.07 g/s	8.43 g/s	5 g/s	7.5 g/s
Flue gas temperature	331 °C	331 / 252 °C	291 °C	273 °C	330 °C
Minimum discharge pressure	12 PA	12 / 13 PA	12 PA	12 PA	14 PA
Dust emissions	18 mg/m ³	≤ 30 mg/m ³	≤ 21 mg/m ³	≤ 20 mg/m ³	≤ 40 mg/m ³
Efficiency rate	82 %	82 / 81 %	80.4 %	82 %	78.9 %

63x40x42 K



63x40x42 S



63x40x51 S



69x49x57 S



TECHNICAL DATA

Width (installation dimension of corpus)	630 mm	630 mm	630 mm	690 mm
Height of door frame	420 mm	420 mm	510 mm	570 mm
Door shapes	90° corner	90° corner	90° corner left / right	90° corner left / right
Hinged doors	as standard	-	-	-
Sliding doors	-	as standard	as standard	as standard

MASS

Width	675 mm	720 mm	720 mm	780 mm
Depth	445 mm	490 mm	490 mm	580 mm
eight	1137-1337 mm	1137-1337 mm	1359-1559 mm	1384-1584 mm
Weight	126 kg	169 kg	185 kg	231 kg
Flue pipe outlet	ø 150 mm	ø 150 mm	ø 150 mm	ø 180 mm

OUTPUT

Nominal heat output acc. to EN 13229	8 kW	8 kW	12 kW	12 kW
Energy efficiency class	A +	A +	A +	A +
Flue gas mass flow	7.65 g/s	7.65 g/s	12 g/s	12.42 g/s
Flue gas temperature	230 °C	230 °C	283 °C	260 °C
Minimum discharge pressure	10 PA	10 PA	10 Pa	12 PA
Dust emissions	30 mg/m ³	30 mg/m ³	27 mg/m ³	≤ 29 mg/m ³
Efficiency rate	82 %	82 %	81.6 %	82 %

89x49x.. S



48x51x51 S3



48x72x51 S3



64x33x51 S3



Notes

TECHNICAL DATA

Width (installation dimension of corpus)	890 mm	480 mm	480 mm	640 mm
Height of door frame	450 / 570 mm	510 mm	510 mm	510 mm
Door shapes	90° corner left / right	3-sided	3-sided	3-sided
Hinged doors	-	-	-	-
Sliding doors	as standard	as standard	as standard	as standard

MASS

Width	977 mm	496 mm	496 mm	656 mm
Depth	568 mm	629 mm	839 mm	449 mm
eight	1209-1409 / 1389-1589 mm	1376-1514 mm	1376-1514 mm	1371-1509 mm
Weight	216 / 222 kg	202 kg	254 kg	199 kg
Flue pipe outlet	ø 180 mm	ø 180 mm	ø 180 mm	ø 150 mm

OUTPUT

Nominal heat output acc. to EN 13229	12 kW	10 kW	15 kW	10 kW
Energy efficiency class	A +	A +	A +	A +
Flue gas mass flow	10.84 / 10.2 g/s	11.96 g/s	17.32 g/s	11.86 g/s
Flue gas temperature	297 / 307 °C	231 °C	270 °C	261 °C
Minimum discharge pressure	12 PA	12 PA	12 PA	12 PA
Dust emissions	≤ 26 mg/m³	≤ 25 mg/m³	≤ 30 mg/m³	≤ 29 mg/m³
Efficiency rate	80 %	82 %	80 %	80 %

75x35x45 S3



65x51 K



VUUR DRIE 60



VUUR DRIE 80



TECHNICAL DATA

Width (installation dimension of corpus)	750 mm	650 mm	635 mm	835 mm
Height of door frame	450 mm	510 mm	510 mm	570 mm
Door shapes	3-sided	straight	3-sided	3-sided
Hinged doors	-	as standard	-	-
Sliding doors	as standard	-	as standard	as standard

MASS

Width	786 mm	704 mm	635 mm	835 mm
Depth	469 mm	494 mm	557 mm	592 mm
eight	1252-1390 mm	1254-1454 mm	1347-1397 mm	1467-1517 mm
Weight	218 kg	202 kg	230 kg	312 kg
Flue pipe outlet	ø 150 mm	ø 180 mm	ø 180 mm	ø 180 mm

OUTPUT

Nominal heat output acc. to EN 13229	10 kW	12,5 (75%) kW	12 kW	15 kW
Energy efficiency class	A +	A +	A +	A +
Flue gas mass flow	11.49 g/s	12 g/s	11.4 g/s	14.8 g/s
Flue gas temperature	263 °C	265 °C	276 °C	254 °C
Minimum discharge pressure	12 PA	12 PA	12 PA	12 PA
Dust emissions	≤ 30 mg/m³	24 mg/m³	28 mg/m³	28 mg/m³
Efficiency rate	80 %	82 %	≥ 80 %	≥ 80 %

Austroflamm fireplace inserts are sold worldwide through specialist retailers.
Please visit our homepage for further information.

www.austroflamm.com

We reserve the right to make technical and visual modifications without prior notice
and do not accept liability for errors in composition or printing.



AUSTROFLAMM

www.austroflamm.com



AUSTROFLAMM GmbH
Austroflamm-Platz 1, A-4631 Krenglbach
T: +43 7249 46443-0, info@austroflamm.com